

Sports Cam

Waterproof • Full HD 1080P



Warning

1. It is a high-precision product do not fall or crash.
2. Do not expose the unit to strong magnetic objects, such as magnet and electrical motor. Avoid strong radio waves. Strong magnetic fields may cause the products breakdown or images and sounds damage.
3. Never leave the products exposed to high temperatures and direct sunlight.
4. Please choose branded Micro SD card. Neutral cards are not guaranteed to work normally.
5. Do not place Micro SD card near strong magnetic objects to avoid data loss.
6. In case of overheating, smoke, or unpleasant smell in the process of charging, unplug your device immediately to prevent fire hazard.
7. While it is charging, keep the product out of children's reach. Power line may cause children accidental suffocation or electric shock.
8. Keep the device in cool, dry and dust-proof places.

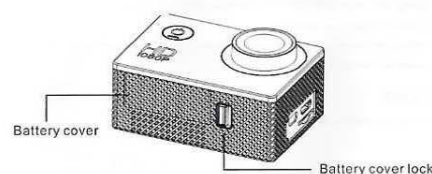
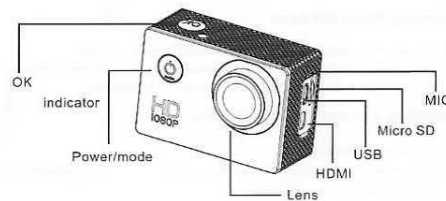
Preface

This product is a high-definition digital motion video recording device tailored to market demand. It has a variety of industry-leading features including digital video recording, photo shooting, audio recording, video display and detachable battery, which makes it perfect for vehicle data recording, photo-shooting, outdoor sport, home security, deep-water probing, etc., allowing you to film at anytime, anywhere. And it has a variety of patents.

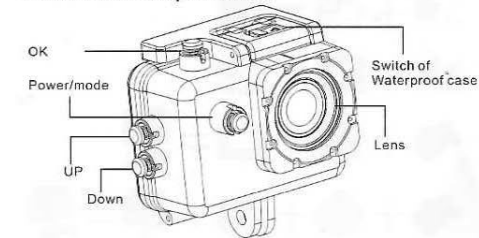
Product Features

1. A water-resistant casing that allows you to film fascinating water sports, water-resistant to 30 meters under water.
2. High definition screen that displays and replays fascinating videos recorded.
3. Detachable battery that is easy to replace and prolongs your camera's service life.
4. Video recording while charging.
5. Video recording with battery.
6. HDMI HD output.
7. Web camera.
8. Support storage cards up to 32GB maximum.
9. Multiple video recording formats: 1080P/720P/AVGA.
10. Recorded in AVI format.
11. Video encryption enabled.
12. Mini appearance, diversified colors available.

Picture of product



Picture of waterproof case



Picture of Accessories



GETTING STARTED

Inserting Micro SD Card

This camera is compatible with 8GB, 16GB and 32GB capacity microSD. You must use a microSD card with a Class 10 speed rating. We recommend using brand name memory cards for maximum reliability in high-vibration activities.

Installing and removing batteries

- A. Please open battery cap to open it.
- B. Correctly install battery into camera as indicated by +/- symbols and direction of arrows marked on battery until it's in place.
- C. Battery Gauge. Please refer to diagram.
- D. Remove Battery. Open cap to take battery out.

Charging

- A. Charging can be done by either connecting camera to computer or adaptor.
- B. Charge camera on vehicle by connecting it to car charger.
- C. Camera can record video while charging.

To power ON:

Press and hold the **Power/mode Button** for 3 to 5 seconds to turn on.

To power OFF:

Press and hold the **Power/mode Button** for 3 to 5 seconds to turn off.

Apply on the personal computer

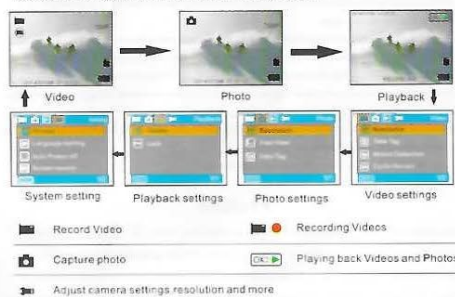
Connect to personal computer. The camera is provided with the plug and play function. Connect the device to the computer with USB line.

TV OUT

Press and hold the **UP Button** for 3 to 5 seconds to TV out.

Mode Switching

Turn camera ON and repeatedly press the **Power/mode Button** to cycle through camera modes and settings. The modes will appear in following order:



VIDEO MODE

To record Video, verify the camera is in video mode. If the on your camera's LCD screen is not showing, press the **Power/Mode button** repeatedly until it appears. To start recording, press the **OK button**. will flash while recording. To stop recording, press the **OK button**. stop flash.

PHOTO MODE

To capture PHOTO, verify the camera is in photo mode. If on your camera's LCD screen is not showing, press the **Power/Mode button** repeatedly until it appears. To take a photo, press the **OK button**. The camera will emit the camera shutter sound.

PLAY BACK

To play back, verify the camera is in Play back mode. If on your camera's LCD screen is not showing, press the **Power/Mode button** repeatedly until it appears. Press **UP button** or **Down button** to choose video or photo file, then press **OK button** to play.

SETTING

Adjust camera settings, resolution and more.

If the on your camera's LCD screen is not showing, Press the **Power/Mode button** repeatedly until it appears.



Resolution: 1920X1080/1280X720/VGA 640X480
Date Tag: Off/On
Motion Detection: Off/On
Cyclic Record: Off/ Three Minute/Five Minute/ten minute
Audio: Off/On
G SENSOR: Off/low/mid/high



Resolution: 2560X1440/1920X1080/1280X720/VGA 640X480
Fast View: Off/2S/5S
Date Tag: Off/On



Delete: Delete This
LOCK: Lock This/Unlock This/Lock All/Unlock All



Format: Cancel/OK
Language Setting: Simplified Chinese/Traditional Chinese/English/Russian/Korean/Japanese/Spanish/Turkish/
Auto Power-off: Off/one minute/three minute/Screen savers: Off/one minute/three minute/five minute
Reset system: Cancel/OK
Time setting: Date time: press **UP/Down** button to set time/date, press **OK button** to affirm.
Video Rotate: Off/On
Version: