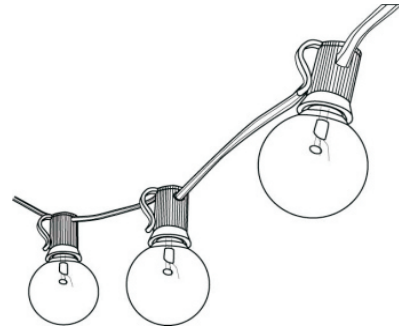


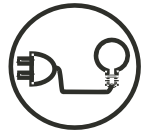
10cm

16cm

G40 Globe String Lights



Never use a bulb broken nor the one with cracks



Keep away from the bulbs when plug in



Children are NOT allowed to play with



IP44-Put Away in Rainy Days

Specifications:

- Light bulb type:G40
- Socket Type: E12
- Voltage: 230V
- Bulb Wattage: 7W
- Maximum Wattage Per Run of Connected String:625W



G40 Globe String Lights

Installation, Safety and Care Instructions

Thank you for purchasing the G40 Globe String Lights.

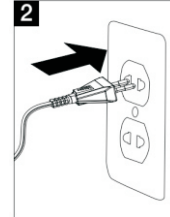
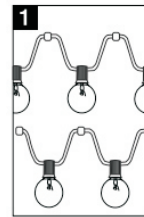
CAREFULLY to avoid the risk of fire, burns or electric shock.Please save these instructions.

INSTALLATION

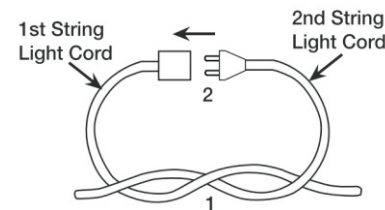
(Hardware, hooks, cable ties and guiding wire are not included.)

1. Hang your String Lights in the desired location, ensure all bulbs are properly secured into their sockets.

2. Plug String Light into power outlet.



NOTICE: When connecting multiple cords together, create a knot with the cord ends as shown below or use a plug protector to prevent the plugs from pulling apart during use.



If used outdoors, the plug must be connected to a Ground Fault Circuit Interrupter (GFCI). To suspend the strand properly,attach it to solid support structures,such as joists, beams or wall studs. We recommend that you use steel guide cables with zip ties and eyebolts(not provided). To avoid piercing the wire or socket's outer covering, do not use nails, staples or other sharp, conducting materials to secure the light strand.Do not cover the lamps with any material, and do not hang objects from the strand. Light sockets must always face downward only. Lamps and sockets should be spaced at not hang objects from the strand Lamps and sockets should be spaced at least 3 cm from walls, ceilings, fabrics, blinds or other materials and/or objects.Be sure that plug

and connector joints will never rest in a place where water may accumulate. Remove the strand after each use. Do not expose it to harsh weather conditions.

SAFETY

- Before first use and before each subsequent use, inspect the strand carefully and discard any product that has cut damaged or frayed wire insulation or cords, cracks in the sockets, loose connections or exposed copper wire.
- Always test your light set before installing. Never operate strand(s) if any bulbs are broken or missing.
- Do not mount or place near heaters, fireplaces, candles or other sources of heat. Keep bulbs well ventilated when lit.
- Bulbs should not touch the supply cord or any wire.
- Do not install in confined spaces.
- Do not cluster the bulbs.
- Do not use with an extension cord unless the plug can be fully inserted.
Make sure that any extension cords used have no cracked insulation or exposed or frayed wires.
- The plug on this product is polarized(one blade is wider than the other)and will only fit into a polarized outlet one way. If it does not fit, contact a qualified electrician.
- CAUTION:** Do not place where doors or windows might closed over the cord and cause damage to the wire insulation.
- CAUTION:** If installed in the tree, to pay attention to personal safety, but also pay attention to protect the glass bulb.
- CAUTION:** Always disconnect the plug end from the power source before changing bulbs and when left unattended.
- CAUTION:** Replace only with same type 7 watt max. Candelabra-base bulbs
Never re-position the interior socket contacts.
- CAUTION:**Do not overload. Do not connect together more than 85 bulbs total
- Never alter the plug.
- Keep out of reach of small children.
- As this product is P44, not completely waterproof, please don't put the bulbs above the power cords. The rain may immerse into the bulbs which will break down.
- Please tighten the bulb gently before use, because the bulb may be loose and will not light up when it's turned on.

CARE

- When uninstalling the product, avoid any under strain or stress on the product conductors, connections and wires. Store in a cool, dry location away from direct sunlight
 - This is an electric product-not a toy!
 - Please keep away from the bulbs as far as possible when plug in to protect you from any personal injuries.
 - Before using, inspect the bulbs carefully to make sure every bulb is in good condition Discard any bulbs that are broken or have cracks or frayed wire insulation or cords, cracks in the sockets, loose connections or exposed copper wire.
 - The string lights would only stand fine rains but NOT heavy rain.
- For your safety,please put away when its rainy.

WARNINGS AND SAFETY INFORMATION

- KEEP OUT OF REACH OF CHILDREN
- For indoor and outdoor use.
- To reduce the likelihood of excessive heat and possible damage, use only decorative lamp accessories packaged with this product.
- This is a parallel-connected lighting string.
- To reduce risk of electric shock, DO NOT connect or disconnect when wet.
- DO NOT use with extension cord near water or where water may accumulate.
- Keep lamps at least 16 feet(4.8m) from pools and spas
- Keep plugs and receptacles dry; DO NOT submerge
- Lighting strings are rated for 220V, 60Hz; DONOT EXCEED 625 total watts, all strings combined.
Do not exceed 85 total bulbs.
- Female connector is to be used ONLY for additional light sets.

NOTICE: The warnings and precautions included in this manual do not cover all conceivable scenarios and outcomes. The operator must exercise caution and common sense when installing and operating this product.

CAUTION:

- DONOT secure cords with staples or nails.
- If changing to a new location, remove bubs before installation.
- INSPECT set up and product condition before each use.
- Keep bulbs at least 3 inches from other objects.

CARE INSTRUCTIONS:

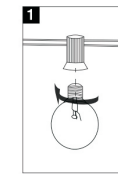
Clean String Light only with a dry, soft cloth. Do NOT use abrasive cleaners.

INSTALLING/REPLACING LIGHT BULBS

WARNING: To prevent serious injury, unplug String Light from electrical outlet before installing/replacing bulbs or fuses. Allow bubs to cool down before touching.

Installing Bulbs:

- Disconnect the lighting string or decorative outfit from the outlet before removing a lamp and replacing it with the ornament.
- Grasp plug and remove from the receptacle or other outlet device. Do not unplug by pulling on cord.
- Unscrew old bub by rotating counterclockwise and removing from socket.
- Install new bulb. Ensure that the base of the bulb is fully threaded into the socket by rotating clockwise. The base of the bulb should be sealed securely to the top of the socket.



WARNING

- Under working conditions, do not tap or force the bulb,which may cause the tungsten wire to melt or glare.
- Before installing and replacing the lamp or fuse, ensure that the lamp string is not in operation and always unplug the product.
- Schlagen Sie unter Arbeitsbedingungen nicht gegen die Glühbirne und wenden Sie keine Gewalt an. Andernfalls kann der Wolframdraht schmelzen oder blenden.
- Vergewissern Sie sich vor dem Installieren und Ersetzen der Lampe oder Sicherung, dass der Lampenstrang nicht in Betrieb ist, und ziehen Sie immer den Netzstecker aus der Steckdose.